

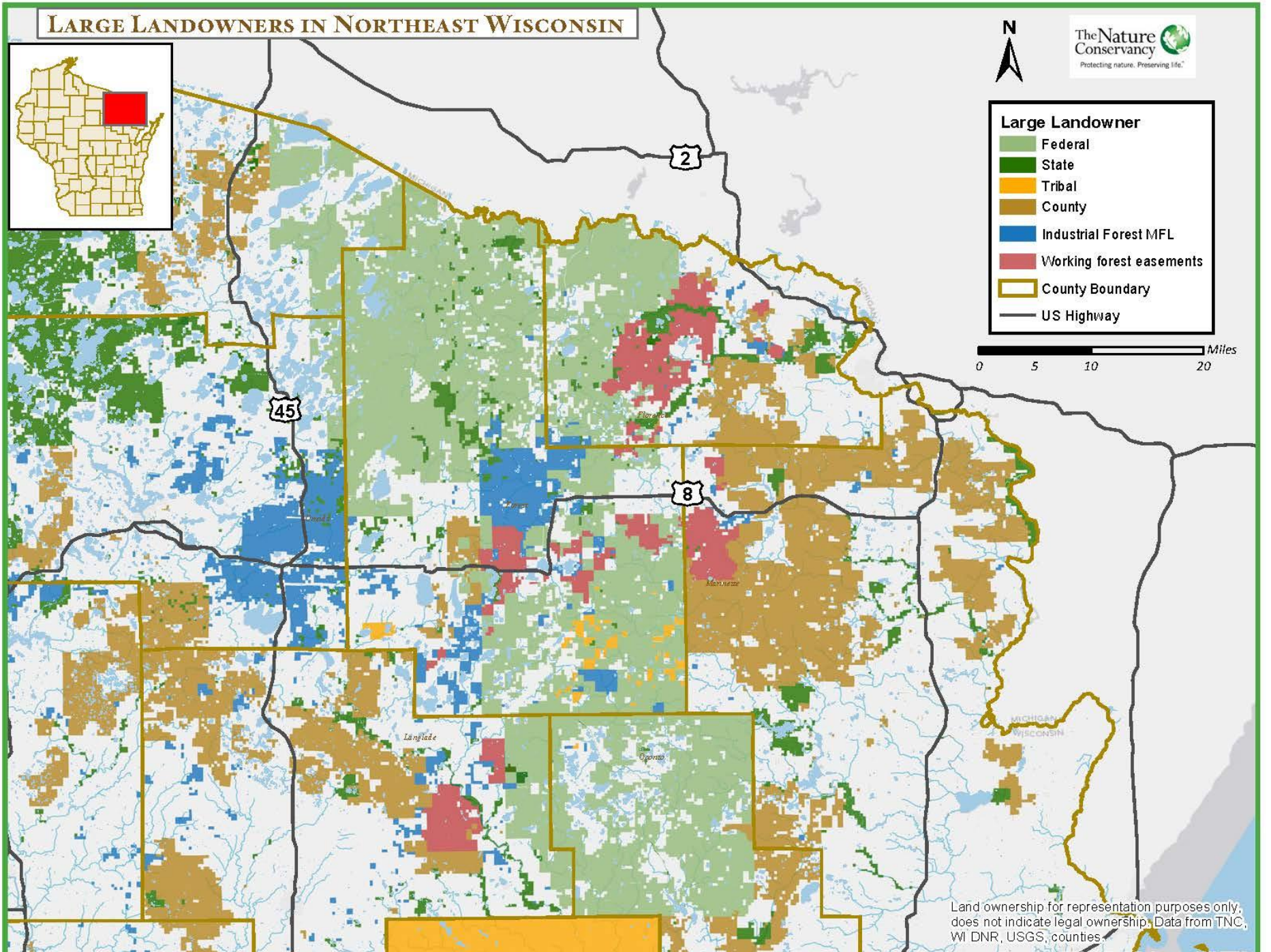
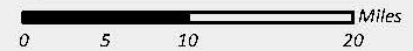


# LARGE LANDOWNERS IN NORTHEAST WISCONSIN



**Large Landowner**

- Federal
- State
- Tribal
- County
- Industrial Forest MFL
- Working forest easements
- County Boundary
- US Highway



Land ownership for representation purposes only, does not indicate legal ownership. Data from TNC, WI DNR, USGS, counties.  
Copyright © 2013 Esri, DeLorme, NAVTEQ

## NEWFIC Vision

Is that of a healthy forest landscape which retains natural resource quality and quantity while providing for the needs of local communities. NEWFIC efforts will sustain and support a working forest landscape to provide recreational opportunities and ecosystem services such as water quality, soil protection, air filtration, and wildlife habitat, while also providing a reliable raw material supply to forest industries that benefit vibrant local communities and schools.





# National Collaboration Cadre

(USFS, Center for Cooperatives, Sen. Baldwin, Chief Tidwell)

## Process

- Held one-on-one stakeholder interviews/conversations (4/10-11)
- Group working Session (4/13)
- Next steps





## Next Steps:

1. Explore the idea of a merger between area groups
2. Work with the UW Center or Cooperatives
3. USFS National Collaborative Cadre will work with UWCC
4. USFS is interested in building a successful Collaborative and may have funding to support the effort
5. Host a meeting in May/June at USFS, Trees for Tomorrow or in Forest Co facilitated by UW Center for Cooperatives.

